

**Frathy**<sup>®</sup>  
1964

**Primavera**  
**Estate**  
**Spring Summer**  
**Printemps Eté**  

---

**2024**



## INDICE

Violetta	4
Crocus	12
Olivia	24
Venus	30
Agatha	42
Virginia	46
Sveva	50
Charlotte	54
Isabel	58
Fiordaliso	62
Gardenia	66
Alyssum	73
Astrid	74

*fratelli*®  
1964





**VIOLETTA**  
*Viscosa Satin*



DF1857



554  
fragola



6450  
blu



9014  
avorio



990  
nero





DF1933



554  
fragola

6450  
blu



9014  
avorio

990  
nero

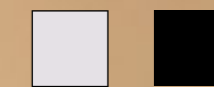


DF1934



554  
fragola

6450  
blu



9014  
avorio

990  
nero



**CROCUS**  
*Filoscozia*®







*fratky*<sup>®</sup>  
1964





DF1936 culotte + DF1937



*Filoscozia® e pizzo Green Label*

DF1938



DF1935 slip

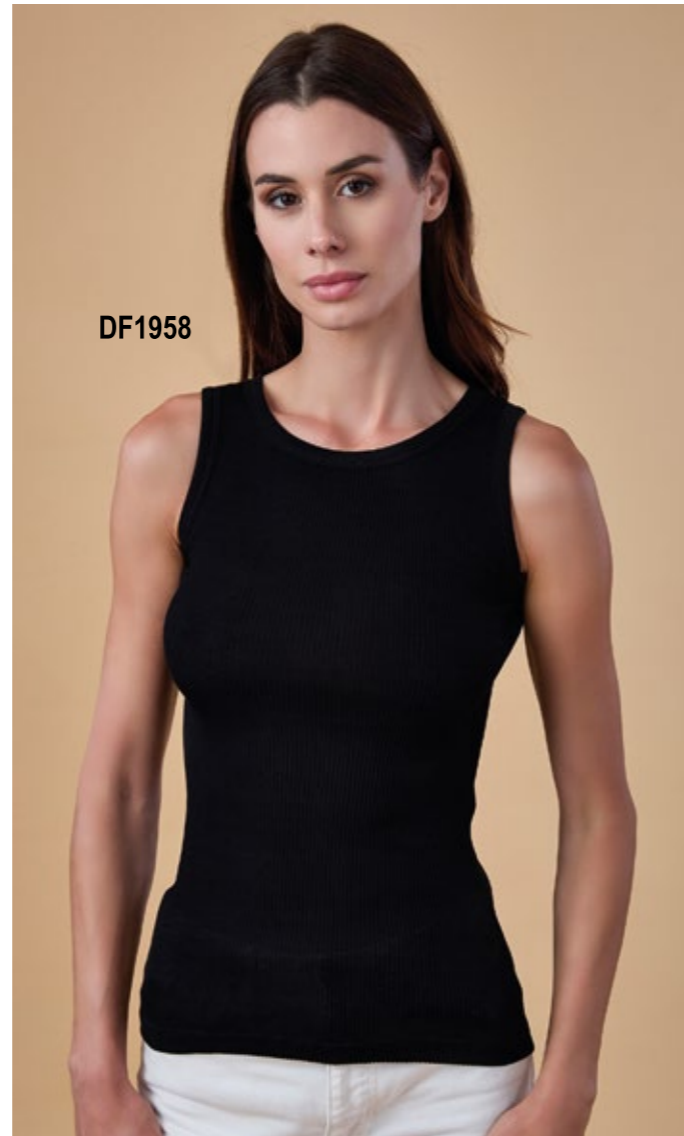
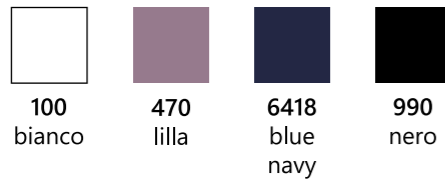




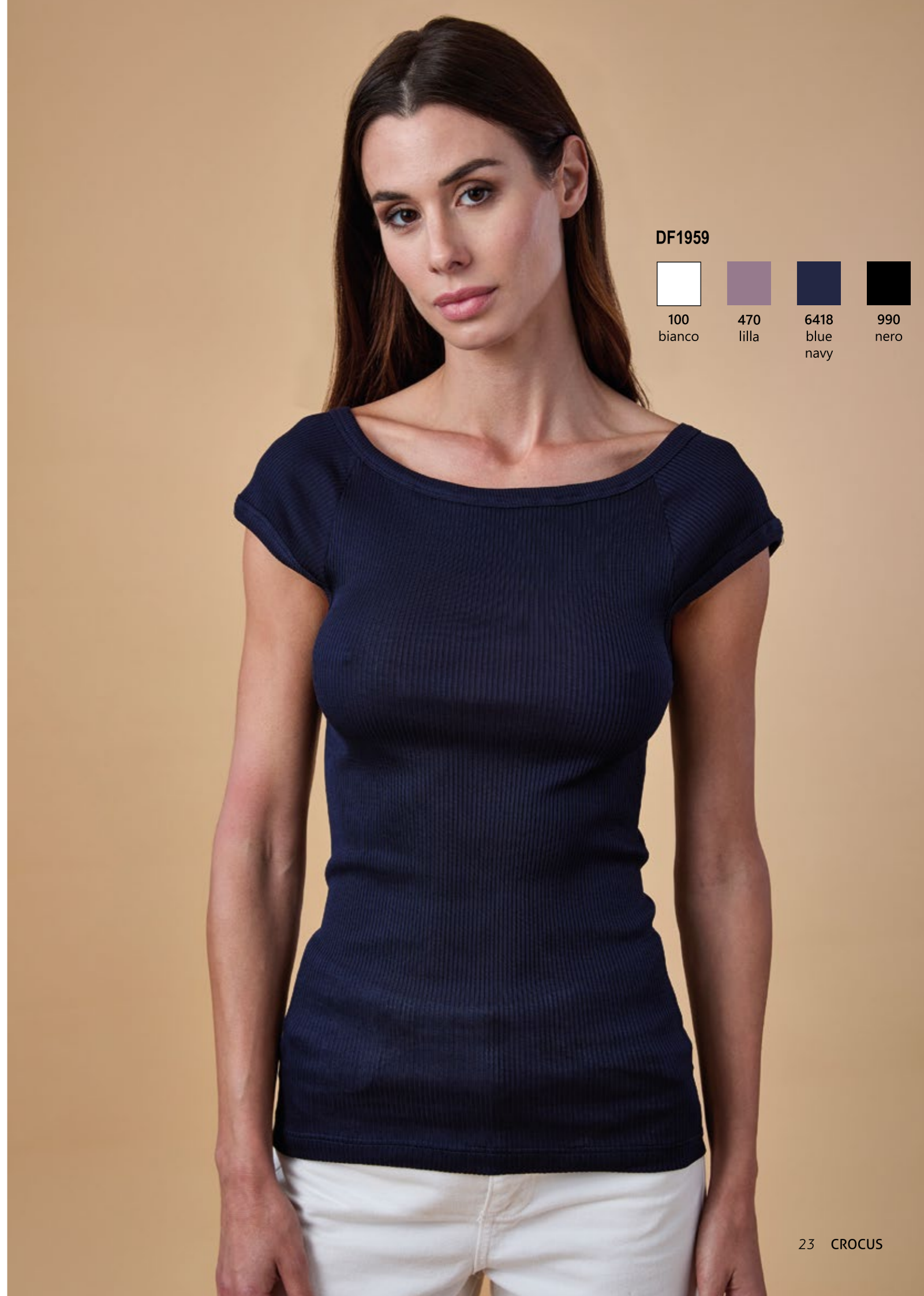
*fraty*®  
1964



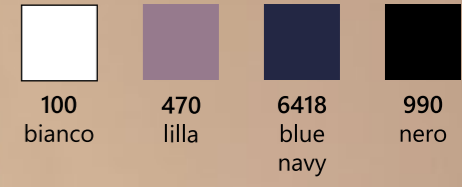
DF1957



DF1958



DF1959



A woman with long dark hair is standing in a lush field of flowers. She is wearing a sleeveless top with blue and white diagonal stripes and a dark blue skirt with a tie belt. She is looking towards the camera with a slight smile. The background is filled with tall green plants and clusters of purple flowers. In the foreground, there are dense yellow-green bushes.

**OLIVIA**  
*Jersey Viscosa*



DF1973



197  
bluette  
panna



DF1974



197  
bluette  
panna



DF1975



197  
bluette  
panna



DF1976



197  
bluette  
panna



**VENUS**  
*Felpa in cotone*



fratly®  
1964





DF1943



126  
ecru



6418  
blue  
navy



DF1944

DF1950



126  
ecru



6418  
blue  
navy



DF1945



126  
ecru



6418  
blue  
navy



DF1946



126  
ecru



6418  
blue  
navy

DF1949



*fraty*<sup>®</sup>  
1964



DF1971



6418  
blue  
navy



DF1972



6418  
blue  
navy



DF1960



6418  
blue  
navy





**AGATHA**  
*Tweed in cotone*

DF1929



986  
neroargento



DF1930



DF1931



986  
neroargento



**VIRGINIA**  
*Cotone Modal®*



339  
w.flowers

DFC571S

DFC570S  
slip





DFC572S



339  
w.flowers

DFC574S



DFC573S



339  
w.flowers

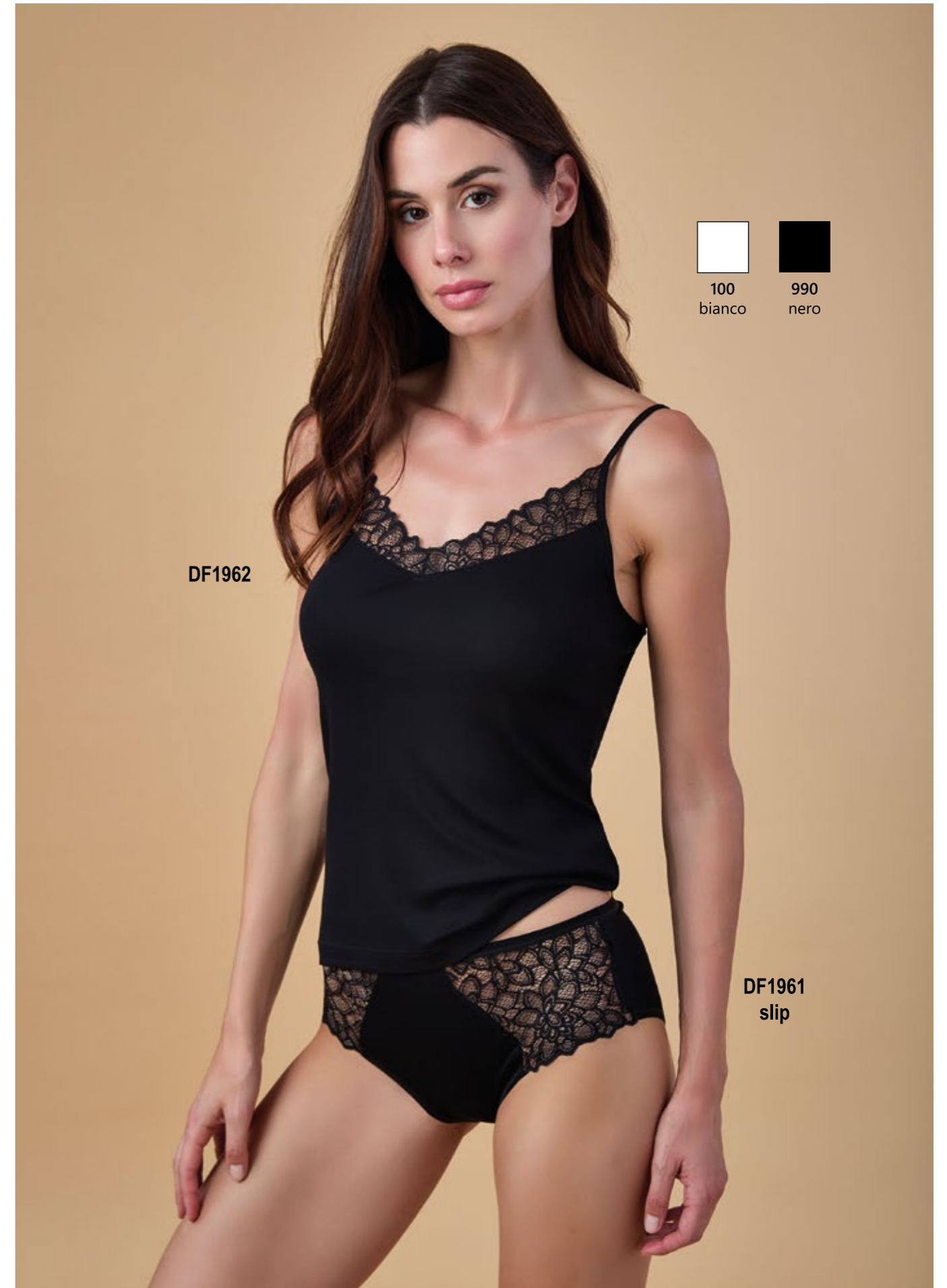


488  
glicine

DFC574

# SVEVA

*Micromodal®*



100 bianco  
990 nero

DF1962

DF1961  
slip



# CHARLOTTE

*Jersey Micromodal®*

DF1939



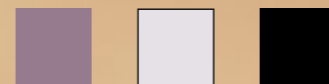
470  
lilla

9014  
avorio  
balza lilla

990  
nero



DF1940



470  
lilla

9014  
avorio  
balza lilla

990  
nero







**ISABEL**  
*Jersey*  
*Micromodal®*



**DF1951**

-  470  
lilla
-  9031  
grigio  
melange
-  990  
nero



**DF1952**

-  470  
lilla
-  9031  
grigio  
melange
-  990  
nero



DF1953



470  
lilla



9031  
grigio  
melange



990  
nero



DF1954



470  
lilla



9031  
grigio  
melange



990  
nero

**FIORDALISO**  
*Cotone Modal®*

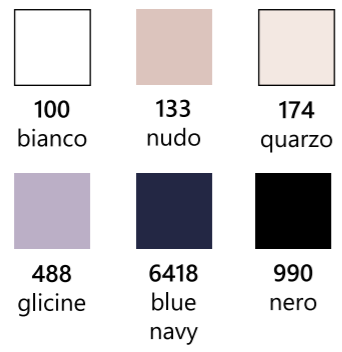






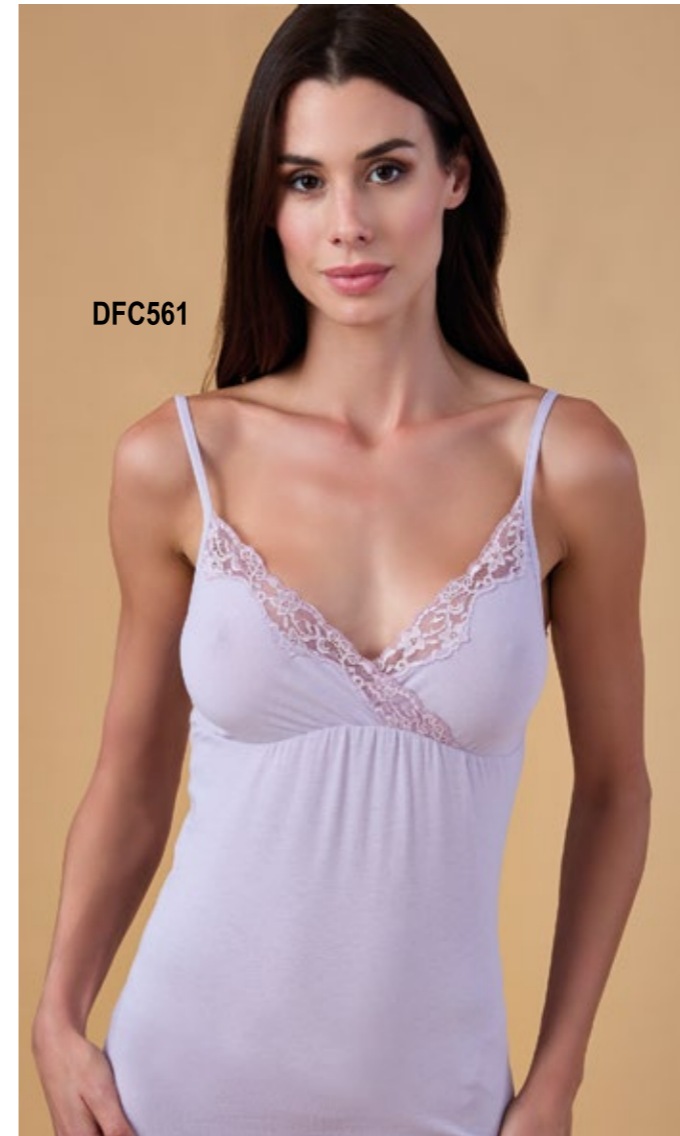
DFC492

DFC491  
slip

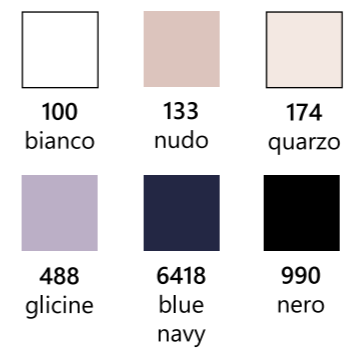


DFC501

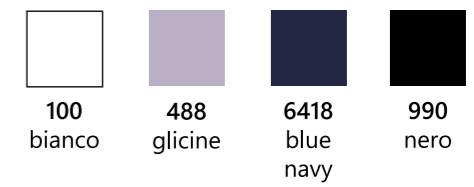
DFC533  
slip



DFC561



DFC562



**GARDENIA**  
*Cotone Modal®*



- 100  
bianco
- 990  
nero
- 648  
blue  
navy

DF567

DF566



DFC463



DFC413

\*non disponibile nel colore verde 792



DFC519

- 100  
bianco
- 133  
nudo
- 174  
quarzo
- 648  
blue  
navy
- 990  
nero
- 488  
glicine
- 792  
verde



disponibile anche nei colori quarzo e glicine



100  
bianco



990  
nero



6418  
blue  
navy



792  
verde



DFC555



DFC556



DFC569



100  
bianco



990  
nero



6418  
blue  
navy



792  
verde

# ALYSSUM

*Cotone elastico*

DF1525



100  
bianco



990  
nero



6418  
blue  
navy





**ASTRID**  
*Tulle ricamato*

DF1965

950  
nero lurex

DF1968

950  
nero lurex

DF1967

DF1966

DF1969



950  
nero lurex



DF1970



950  
nero lurex







*fraly*  
1964

**Sistema Tessile s.r.l.**  
Bergamo (Italy)

T + 39 035 575707

F + 39 035 573701

[info@fraly.it](mailto:info@fraly.it) [www.fraly.it](http://www.fraly.it)